

Fluofarma provides comprehensive services for oncology research that can help you identify, compare and characterize your anti-cancer drugs.

Fluofarma oncology tools

Cancer models:

Panel of human cancer cell lines representative of major tumor types.

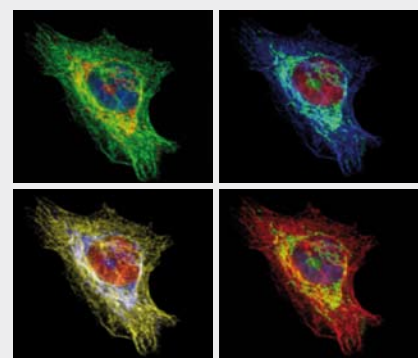
Engineered cell lines **overexpressing specific targets** for focused screening.

Molecular reporters:

Cell lines expressing **recombinant biosensors** measuring key events involved in cell proliferation and apoptosis.

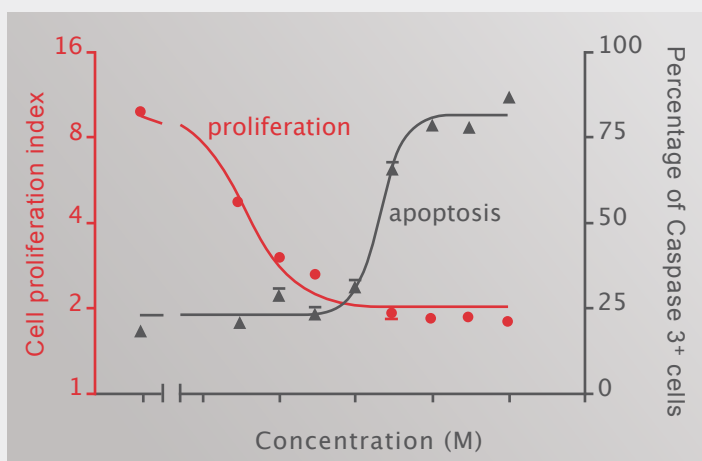
DCffer®:

Mechanistic drug profiling based on a unique multiparameter approach.



Identify, characterize and compare

Anticancer drug candidate



Identification of drugs

which act on a specific cancer type or a specific target.

Functional characterization

of hits through dose-response functions in multiplexed assays.

Comparison of drugs

using a proprietary functional signature database of reference anti-cancer compounds (DCffer®).

Determination of the mechanism of action

by analysing up to 130 molecular events.